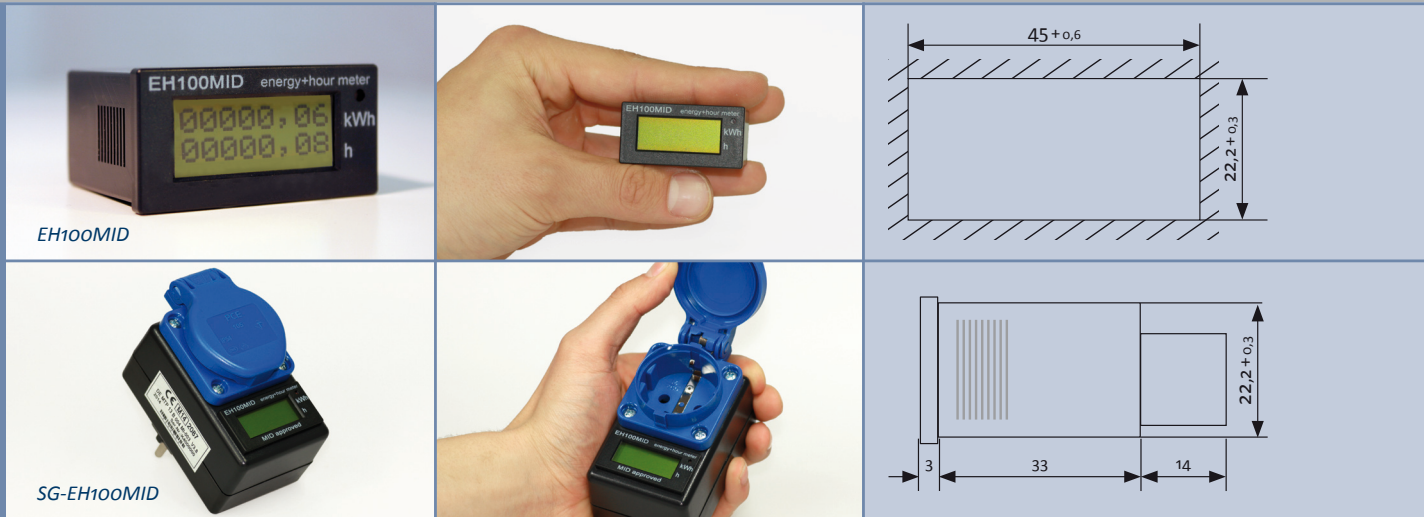


Energy and Hour Meter (EH100MID/SG-EH100MID)



Description

- certified energy and hour meter for portable devices (MID compliant (Modul F))
- display range: 5 decimal places before and 2 after the decimal point (e.g. 14732.67 kWh)
- required by law for billing purposes with insurance and customers
- **front frame 48 mm x 24 mm (optional frame adapter for any installation sizes)**
- **identical with conventional hour meter, without housing rework 1:1 interchangeable**
- protection class II, IP65 from the front in installed condition
- insensitive to shock and vibrations
- built-in error detection
- developed and produced in Germany
- SG-EH100MID is available in a housing (I_{max} = 15 A/3500 W); IP54, ready for use

Energy meter

The used energy will be measured and displayed in 0.01 kWh increments. The meter reading will be saved permanently in a non-volatile memory after each change (data preservation > 10 years). The LED on the front plate will blink according to the currently used energy: slow blinking = low energy consumption, quick blinking = high energy consumption.

Hour meter

The places after the decimal point are stated as „decimal“ hours 0 to 0.99; data integrity at least 10 years. The smallest unit 0.01h hereby corresponds to 1/100 hour, which is equal to 36 seconds; accuracy 2 %. A blinking star at the last position signals that the meter functions properly.

Technical data

Rated voltage:	230 V -20 % + 15 % 50 Hz
Electricity:	I _{max} = 25 A (EH100MID) I _{max} = 15 A (SG-EH100MID)
Temperature range:	-10°C bis +55°C
Storage temperature:	-20°C bis +70°C
Height:	up to 2.000 m
Protection class:	I (SG-EH100MID), II (EH100MID)
Type of protection:	IP65 from the front in installed condition (EH100MID) IP54 (dust- and splash-proof, suitable for outdoor use) (SG-EH100MID)
Clamps:	Screw terminals max. conductor cross-section 2.5 mm ²
Display:	LCD 2 x 8 places, font size 5 mm
Casing:	approx. 48 mm x 24 mm according to DIN 43700 (EH100MID) approx. 56 mm x 86 mm x 63 mm (SG-EH100MID)
Switch panel cut-out:	22,2 mm + 0,3 mm x 45 mm + 0,6 mm
Installation depth:	approx. 33 mm without clamp, approx. 47 mm with clamp
Weight:	approx. 60 g (EH100MID); approx. 200 g (SG-EH100MID)
effective power:	< 0.5 W
certificate:	DE-MTP 13 B 004 MI-003

Energy meter

Meter constant LED:	6.400 Imp/kWh
Amperage definitions:	Actual = 20 mA, I _{min} = 0.25 A, I _{tr} = 0.5 A, I _{ref} = 5 A, I _{max} = 25 A
Accuracy class:	B (1 %)



frame adapter +
fastening clip



frame adapter 25 x 50 mm

Scope of delivery

- Meter EH100MID for switch panel cut-out 22.2 + 0.3 x 45 mm + 0.6
- front frame seal
- fastening clip
- Operating and Installation Instructions
- SG-EH100MID: assembled in housing (I_{max} = 15 A)

Optional accessories

- Installation frame adapter for switch panel cut-out 25 + 0.5 x 50 mm + 0.6 incl. front frame seal
- Other dimensions of installation frame adapters upon request

Please note:

- Subject to technical changes without advanced notice.

Contact

Schnabel Elektrotechnik GmbH, Ansprechpartner: Werner Schnabel
Birkenwaldstraße 27, 74821 Mosbach, Germany
phone: 0 62 63 - 42 75 17, email: info@energiezaehler.eu, internet: www.energiezaehler.eu